



Striking a Balance: State Role in Water Quality

26 June 2014

Stephenie MacLagan
Shoreland Zoning Program

MAINE DEPARTMENT OF ENVIRONMENTAL PROTECTION

Protecting Maine's Air, Land and Water

Outline

6:40-7:10

- Transition from problem to action
- Maps as tools
- Vegetated buffers
- Farms and agriculture
- Stormwater
- Wastewater systems
- Resources and funding
- Questions



Clams & Land Use

» Clams & Economy

Clams & Land Use

Landowner Toolbox

Farm Operations

Overboard
Discharges

Septic Systems

Community
Culture

Municipal Toolbox

Land Use in
Buffer Areas

Septic Systems

Sanitary
Surveys

Stormwater
Runoff

Mudflats Mapped

Education and Services

Information, Assistance
and Funding



<http://wccog.net/clams-economy.htm>

What can you do?

Landowners and municipal officials support shellfish by learning where pollution originates, sharing stories and providing education, and then taking action to address water quality concerns.

<http://wccog.net/land-use.htm>

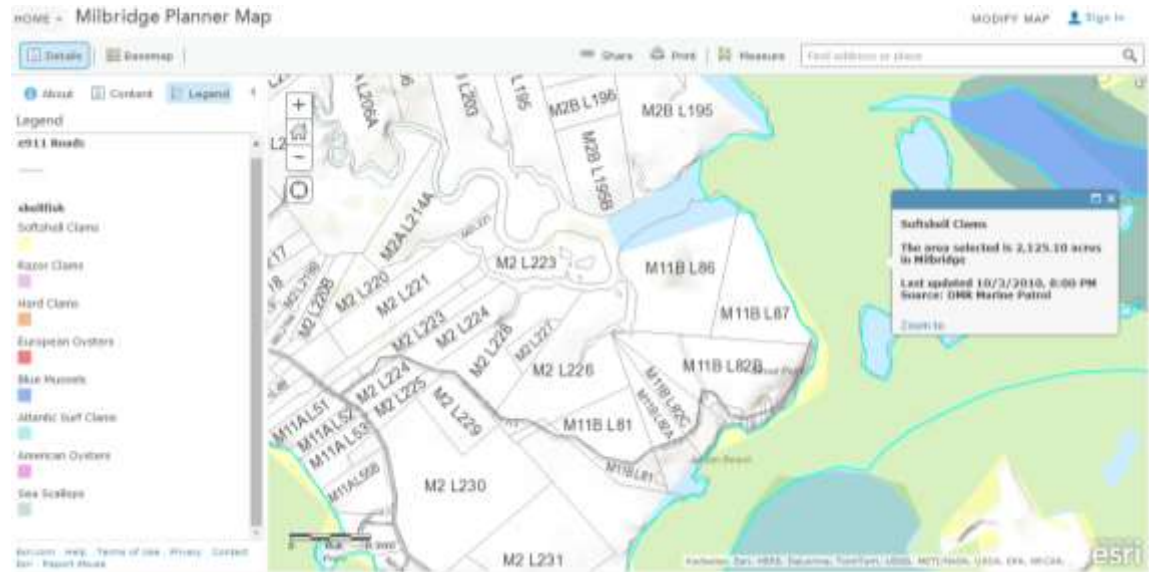
- [The landowner toolbox](#) contains information and actions available to address water quality
- [The municipal toolbox](#) contains resources and approaches available for local officials
- [Mudflats Mapped](#)—find your watershed, identify the hot spots
- [Raise awareness](#) with services provided by WCCOG
- [Find partners](#) and other resources



Planners Maps

GIS Maps as tools

- Depict potential pollution sources
- Show likely routes of pollution
- Help concentrate municipal resources

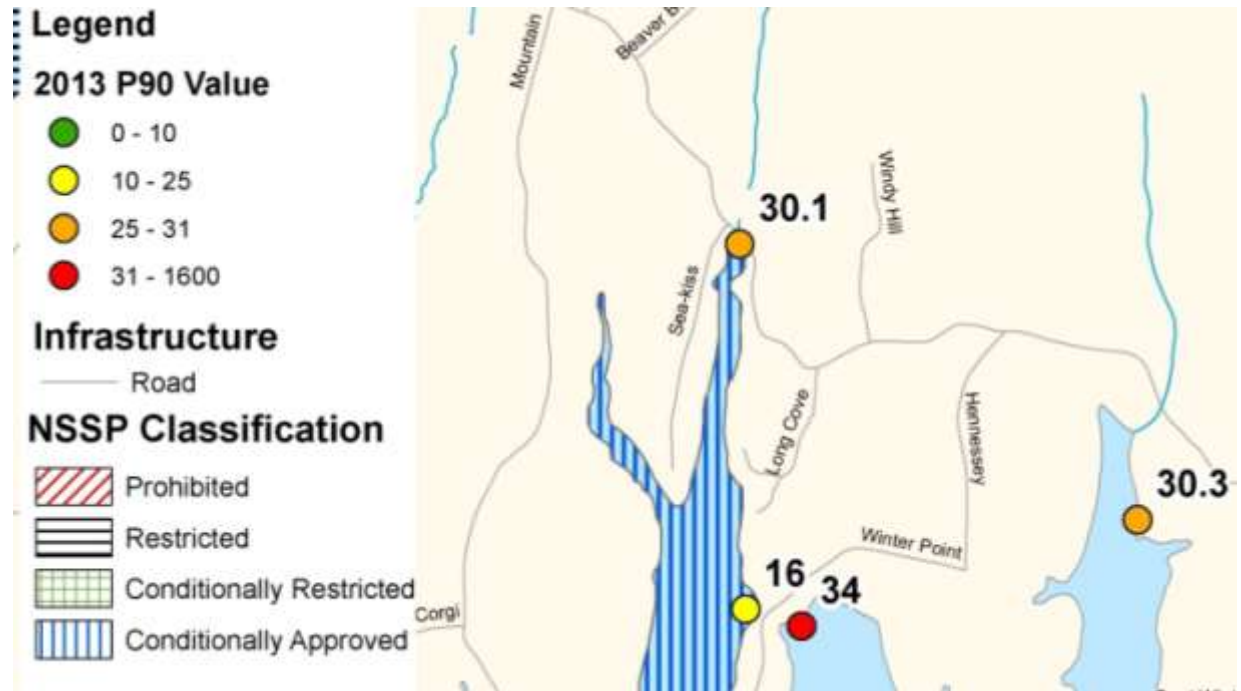


<http://gro-wa.org/planners-maps.htm>

DMR Maps

Maps help with

- Identifying hotspots
- Prioritization for sanitary surveys
- Concentrating municipal resources



www.maine.gov/dmr/rm/public_health/

Vegetated Buffer Areas

Municipal Toolbox

- Natural (cheap) filtration
- Shoreland zoning
 - Keep up-to-date
 - Support CEO
 - Guide citizens
- Encourage BMPs on farms and for roads

www.maine.gov/dep/land/slz/

<http://wccog.net/buffer.htm>

Landowner Toolbox

- Natural (cheap) erosion controls
- Sense of privacy
- Bird/wildlife entertainment



Farming & Agriculture

Landowner Toolbox

- Adjust grazing, maintain cover
- Avoid sensitive areas
- Alternative sources of shade
- Develop & implement conservation practices or nutrient management plans

<http://wccog.net/farms.htm>



Stormwater

<http://wccog.net/stormwater.htm>

Municipal Toolbox

- Low impact development
 - Minimize impervious areas
 - Preserve natural features
 - Encourage bioretention or
 - Permeable pavements

Landowner Toolbox

- Install similar features:
 - Create raingardens etc.
 - Create vegetated roofs
 - Use rain barrels



Support Upgrades

Treatment Plant Discharge

- \$3.2 million in harvester income loss over 9 years
- \$5.13 million in total output (direct & indirect economic) losses

Courtesy of Kevin Athearn

www.maine.gov/dep/water/grants/srfparag.html

<http://wccog.net/partners-page.htm>



Wastewater Disposal Systems

Municipal Toolbox

- Septic systems
- Decentralized systems



Landowner Toolbox

- Pump/inspect systems
- Homeowners Guide
- Septic Systems pamphlet
- Apply through municipality for grants

<http://gro-wa.org/wastewater-resource-manual>

<http://wccog.net/septic.htm>

Overboard Discharges

Landowner Toolbox

- Proximity to closed shellfish area
- Ensure functionality
- Apply for grants

www.maine.gov/dep/water/grants/obdpara.html

<http://wccog.net/obd.htm>

Municipal Toolbox

- Guide landowners



Resources and Funding

Partners and funding sources

Maine Department of Environmental Protection

[This agency](#) aims to abate and prevent water and land pollution. Resources are available for municipal officials, owners of overboard discharges (OBD) and landowners in the watersheds of shellfish flats. These pages include contact information.

- Landowner [nonpoint source pollution](#) and [vegetation buffer](#) resources
- Municipal wastewater [discharges](#), and [funding](#) for wastewater facilities and projects
- [Newsletters](#)
- OBD [regulations](#) and [funding](#)
- [Small Community Grants](#) for malfunctioning septic systems that impact shellfish flats
- [Shoreland Zoning](#) regulations and resources

Maine Department of Agriculture, Conservation and Forestry

[This agency](#) assists municipal planners, farmers and landowners to ensure water quality is protected. These pages include contact information.

- [Agricultural Compliance Program](#) investigates complaints and provides BMP information
- [Maine Coastal Program](#) administers multiple grants and the [Working Waterfront Initiative](#)
- [Municipal Planning Assistance Program](#) provides planning expertise
- [Nutrient Management Program](#) assists farmers with plans and compliance
- [Full list of grants](#)

Natural Resources Conservation Service

The [National Conservation Practice Standards](#) list information and choices for choosing management strategies best suited for each farm.

- [NRCS](#) provides technical assistance and funding opportunities
- The local [Soil and Water Conservation District](#) helps with developing conservation plans

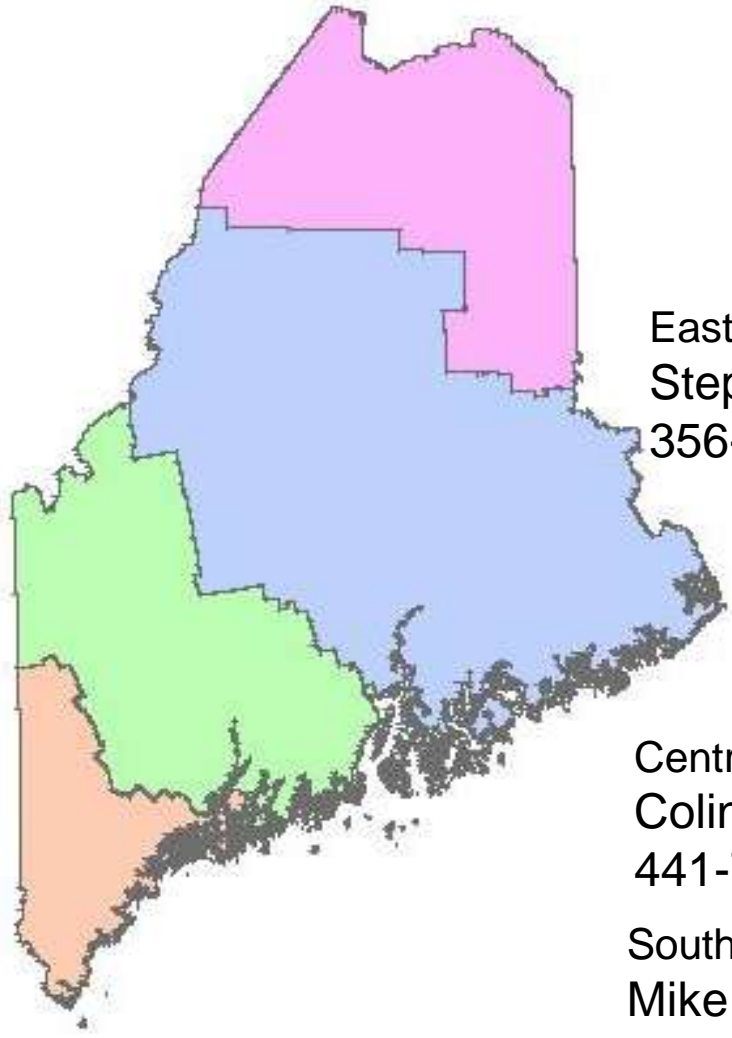
The District Conservationist for NRCS is also the local SWCD contact for Washington County: [contact information](#)

- State agencies
- NRCS & SWCD
- Research institutes
- Organizations

<http://wccog.net/partners-page.htm>



Shoreland Zoning



Shoreland Zoning News:
www.maine.gov/dep/newsletters/

Eastern Maine
Stephenie MacLagan
356-1643



Central Maine
Colin Clark
441-7419

Southern Maine
Mike Morse
822-6328





www.maine.gov/dep