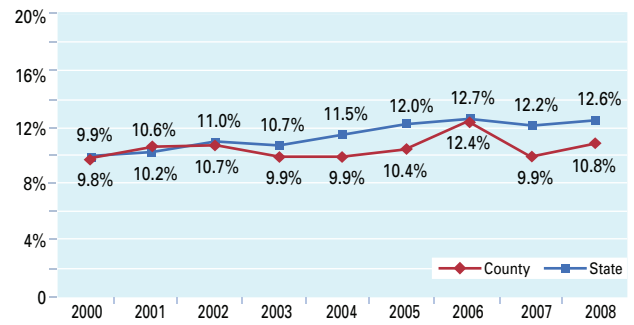


PROFILE

- Hancock County's individual poverty rate for the population as a whole and for those under age 18 in 2008 were both lower than the state rate.
- Census estimates for 2008 show that Hancock County has a somewhat older population compared with other Maine counties, with a higher percentage in the 18-64 and 65 and over age categories, and a lower percentage age 18 and under.
- Hancock County's 2008 median household income was somewhat above the state's. It was about 8% above the 200% poverty level for a four-person household.
- The 2008 "livable wage" estimate in Hancock County for a four-person household (2 parents, both wage earners, and 2 children) was more than 2.6 times greater than the poverty level for a four-person household.
- The proportion of net personal income from earnings in Hancock County in 2008 was considerably lower than in the state as a whole, and income from investments was considerably higher; the proportion from transfer payments was about the same. Among Maine counties Hancock had the third highest proportion of personal income from investments. This pattern is consistent with the presence of a higher proportion of well-off retirees.
- Hancock County's average unemployment rate in 2009 was about the same as the state as whole.
- In 2006, Hancock County had about the same proportion of federal income tax filers claiming the earned income tax credit (EITC) as in the state as a whole, and the average amount of the credit was close to the state average.

Poverty Rate Estimates — % Individuals Below Poverty

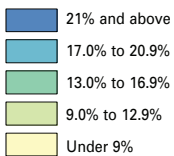


- Hancock County was considerably below the state average in FY2008-09 in the proportion of households and of the total population receiving the Supplemental Nutrition Assistance Program (SNAP) benefit. Hancock had the second lowest percentage of households receiving the SNAP benefit among Maine's counties.
- The proportion of school-age children eligible for free or reduced lunch in FY2009-10 in Hancock County was just slightly lower than the state average.
- Hancock County in FY2008-09 had about the same proportion of households and individuals receiving LIHEAP as in the state as a whole. Compared with the state, Hancock County had a much lower proportion of LIHEAP recipients receiving the SNAP benefit. Annualized household income of LIHEAP recipients in Hancock County was lowest in the state among Maine's counties.

TREND HIGHLIGHTS

- Hancock County's poverty rate varied somewhat more than that of the state rate from 2000 to 2008.
- The unemployment rate trend in Hancock County generally paralleled the state's from 2002 through 2009. In 2002 and 2003 Hancock's rate was close to that of the state, but from 2004 to 2009 it was higher than the state rate. As in the rest of the state, Hancock County's 2009 unemployment rate was at its highest point in many years, twice what it had been in 2002.
- The number of Hancock County households receiving LIHEAP varied by only a little from FY2001-02 to FY2007-08. With the change in eligibility requirements in FY2008-09, the number of households receiving LIHEAP increased by 30.7% compared with the average over the previous seven years
- As in the rest of the state, the number of Hancock County households receiving the SNAP benefit increased every year. Hancock had a 128% increase from FY2001-02 to FY2008-09, the highest increase among Maine's counties. However, the proportion of households and individuals receiving the SNAP benefit was lower than might be expected, given the county's rates of poverty and unemployment and the receipt of other benefits during this period.
- From FY2002-03 to FY2009-10, Hancock County had a slightly lower percentage of students eligible for free or reduced lunch than in the state as a whole.

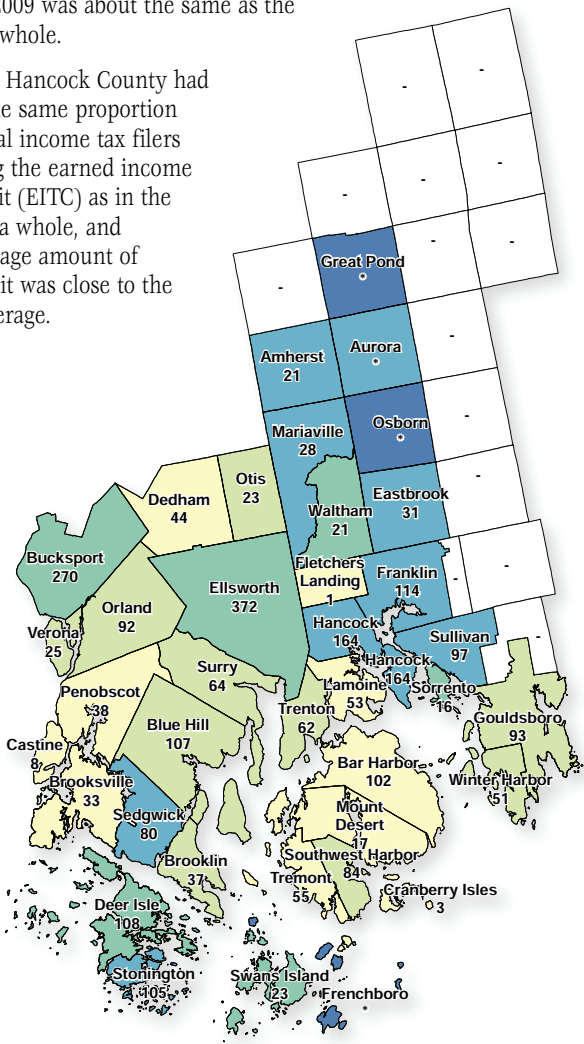
Households Receiving LIHEAP Benefits, FY2008-09



State Rate = 11.2%  
County Rate = 11.3%

Source: Derived from LIHEAP household database provided by Maine State Housing Authority.

Numbers are households receiving LIHEAP benefits.  
\* Fewer than 50 total households (Census 2000)  
- No households or no data



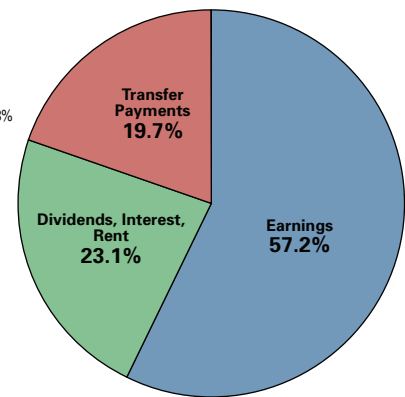
## Poverty, Employment, Income

	COUNTY		STATE	
<b>Poverty, 2008</b>				
All individuals	5,149	9.9%	161,170	12.6%
Age 0-17	1,523	15.0%	43,943	16.5%
<b>Unemployment, 2009</b>				
Labor force (total)	30,124		703,367	
Monthly average unemployment rate	8.8%		8.2%	
<b>Earned Income Tax Credit Filings, 2006</b>				
EITC Filers*	3,848	14.4%	87,791	14.1%
Average EITC claimed	\$1,634.34		\$1,687	
<b>Median Household Income, 2008</b>	<b>\$44,632</b>		<b>\$46,419</b>	

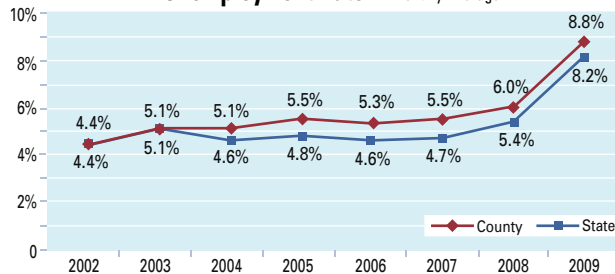
\* Percentage is based on total tax returns filed.

## Per-capita Personal Income by Source, 2008

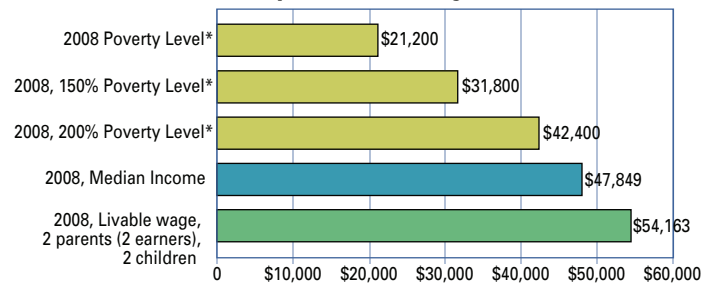
State Personal Income:  
 Net earnings = 63.8%  
 Transfer payments = 20.3%  
 Dividends, interest and rent = 15.8%



## Unemployment Rate — Monthly Average

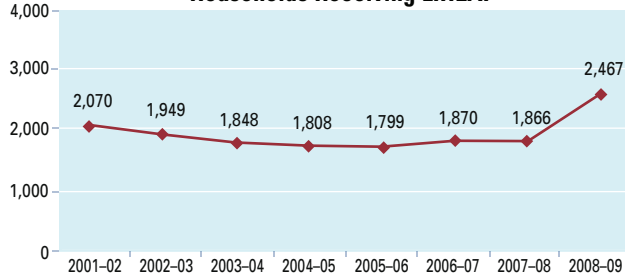


## Poverty and Livable Wages

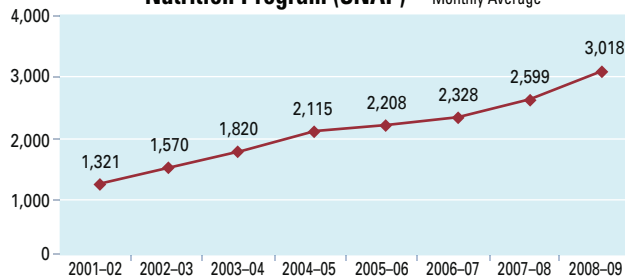


\* DHHS poverty guidelines for four-person household.

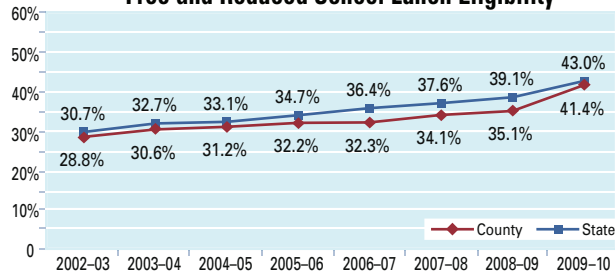
## Households Receiving LIHEAP



## Households Participating in Supplemental Nutrition Program (SNAP) — Monthly Average



## Free and Reduced School Lunch Eligibility



## Supplemental Nutrition Assistance Program (SNAP) and LIHEAP Benefits, FY2008-09

	COUNTY		STATE	
<b>SNAP, Monthly Average*</b>				
Cases (households)	3,018	13.8%	102,014	19.7%
Recipients (individuals)	6,261	12.1%	204,379	16.0%
<b>LIHEAP*</b>				
Households	2,467	11.3%	57,937	11.2%
Recipients (individuals)	5,624	10.9%	139,132	10.9%
<b>LIHEAP Client Household Characteristics**</b>				
Single person households	1,253	50.8%	,932	49.9%
Receiving SNAP benefits	1,206	48.9%	30,922	53.4%
Applicants age 65 & over	894	36.2%	21,635	37.3%
Annualized household income (average)	\$14,975		\$16,101	

\* Percentage cases or households is % of total county or state households in 2000 Census; percentage recipients is % of county or state population in 2000 Census.

\*\*Percentage is % of LIHEAP households.

